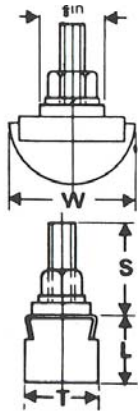




MORGAN
INDUSTRIAL CARBON

CARBON CONTACT TIPS

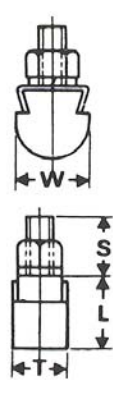
for drum collectors



Product No.
565/18824/H
Link Grade DM5A

	in	mm
L	7/16	11.1
W	7/8	22.2
T	1/2	12.7
S	3/8	15.9

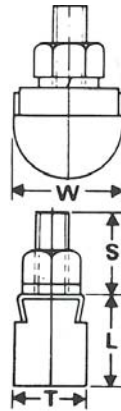
Thread 2BA



Product No.
565/18827/B
Link Grade DM5A

	in	mm
L	1/2	12.7
W	1/2	12.7
T	3/8	9.5
S	3/8	9.5

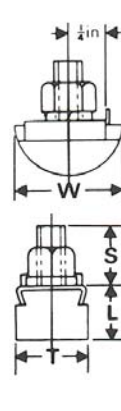
Thread 2BA



Product No.
565/18828/K
Link Grade DM5A

	in	mm
L	3/8	15.9
W	3/4	19.0
T	1/2	12.7
S	1/2	12.7

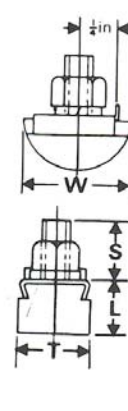
Thread 0BA



Product No.
565/18829/I
Link Grade DM5A

	in	mm
L	3/8	9.5
W	3/4	19.0
T	1/2	12.7
S	3/8	9.5

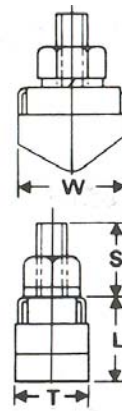
Thread 2BA



Product No.
565/18830/B
Link Grade DM5A

	in	mm
L	1/2	12.7
W	3/4	19.0
T	1/2	12.7
S	1/2	12.7

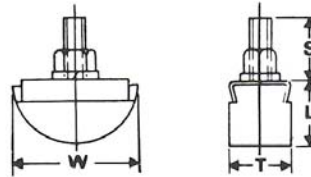
Thread 2BA



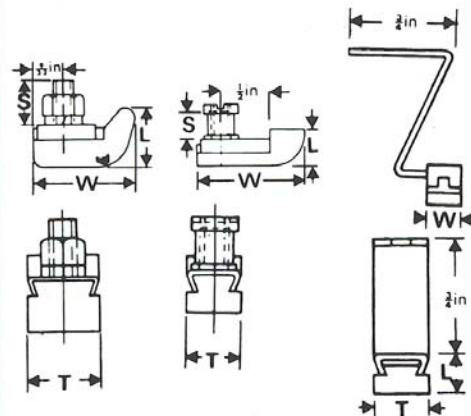
Product No.
565/18823/J
Link Grade DM5A

	in	mm
L	7/16	14.3
W	3/4	19.0
T	1/2	12.7
S	1/2	12.7

Thread 0BA



starter contact tips-



Product No.
566/18831/K
Link Grade DM5A

	in	mm
L	1/2	12.7
W	7/8	22.2
T	1/2	12.7
S	3/8	9.5

Thread 2BA

Product No.
566/18832/I
Link Grade DM5A

	in	mm
L	3/8	9.5
W	1 1/16	27.0
T	3/8	9.5
S	3/16	7.9

Thread 2BA

Product No.
565/18835/C
Link Grade DM5A

	in	mm
L	7/16	7.9
W	7/16	7.9
T	11/32	8.7

Product No.	Link Grade	L		W		T		S		Thread
		in	mm	in	mm	in	mm	in	mm	
565/18825F	DM5A	3/8	9.5	3/4	19.0	3/8	9.5	3/8	9.5	2BA
565/18837J	DM5A	3/8	9.5	3/4	19.0	1/2	12.7	1/2	12.7	2BA
565/18537K	DM5D	3/8	9.5	3/4	19.0	1/2	12.7	1/2	12.7	2BA
565/18833G	DM5A	1/2	12.7	1	25.4	7/32	7.1	3/8	9.5	2BA
565/18826D	DM5A	1/2	12.7	1	25.4	3/8	9.5	1/2	12.7	2BA
565/18816G	DM5A	1/2	12.7	1	25.4	1/2	12.7	1/2	12.7	2BA
565/18834E	DM5A	1/2	12.7	1 1/8	25.4	3/4	19.0	1/2	12.7	2BA
565/18817E	DM5A	7/16	14.3	1 1/8	28.6	1/2	12.7	1/2	12.7	0BA
565/18818C	DM5A	3/8	15.9	1 1/8	31.8	3/8	9.5	1/2	12.7	2BA

Product No.	Link Grade	L		W		T		S		Thread
		in	mm	in	mm	in	mm	in	mm	
565/18819A	DM5A	3/8	15.9	1 1/4	31.8	1/2	12.7	1/2	12.7	2BA
565/18820E	DM5A	3/8	15.9	1 1/4	31.8	1/2	12.7	3/8	15.9	2BA
565/18821C	DM5A	3/8	15.9	1 1/4	31.8	1/2	12.7	1/2	15.9	0BA
565/18541I	DM5D	3/8	15.9	1 1/4	31.8	1/2	12.7	3/8	15.9	0BA
565/18838H	DM5A	3/8	15.9	1 1/4	31.8	7/16	14.3	1/2	12.7	2BA
565/18822A	DM5A	3/8	15.9	1 1/4	31.8	3/8	15.9	3/8	15.9	0BA
565/18836A	DM5A	3/8	15.9	1 1/4	31.8	3/4	19.0	3/8	15.9	0BA
565/18538I	DM5D	3/8	15.9	1 1/4	31.8	3/4	19.0	3/8	15.9	0BA



Head Office-Sydney
21 Amour St
Revesby NSW 2212
T: 02 9772 5600
F: 02 9774 5677
E: sales@morgancarbon.com.au

Melbourne
5/23-25 Bunney Rd
South Oakleigh VIC 3167
T: 03 9551 2377
F: 03 9551 2177
E: mel@morgancarbon.com.au

Perth
4/195 Bannister Rd
Canning Vale WA 6155
T: 08 9456 3711
F: 08 9456 3716
E: per@morgancarbon.com.au

Brisbane
34 Aerodrome Rd
Caboolture QLD 4510
T: 07 5433 7100
F: 07 5432 4899
E: bri@morgancarbon.com.au

Auckland
5c Clemway Place
PO Box 21195
Henderson Auckland 1231 New Zealand
T: 09 836 9220 / 0800 CARBON (0800 227 266)
F: 09 836 9129 / 0800 4 BRUSH (0800 427 874)
E: sales@morgancarbon.co.nz



Quality System
Quality Endorsed Company
ISO 9001:2000
Lic. No. 0334
SAS Global
Sydney Only