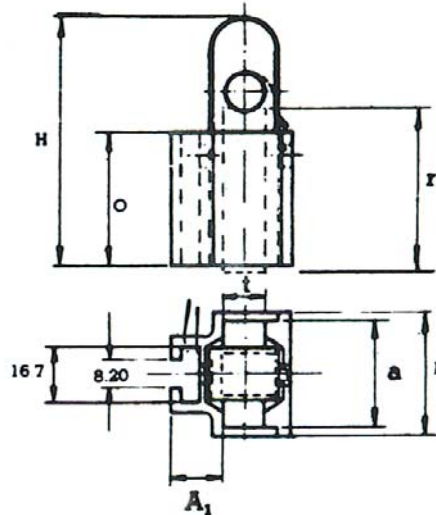


# CONSTANT FORCE BRUSH HOLDERS

ZKA extruded type

## Series ZKA (extruded) radial brush holder



Type number	t	a	r	B	O	H	A1	GMS force	Newtons
ZKA1206m/1004	10	20	40	24	32	64	14.73	375	3.68
ZKA1208m/1004	12.5	20	40	24	32	64	14.73	503	4.93
ZKA1608m/1002	12.5	25	40	30	32	64	14.73	567	5.56
ZKA1608m/1010	12.5	25	40	30	25	52	9.50	908	8.90
ZKA1610m/1002	16	25	40	30	32	64	14.73	567	5.56
ZKA2006m/1002	10	32	50	37	40	75	14.73	567	5.56
ZKA2008m/1002	12.5	32	50	37	40	75	14.73	708	6.95
ZKA2010m/1002	16	32	50	37	40	75	14.73	962	9.43
ZKA2012m/1002	20	32	50	37	40	75	14.73	1134	11.12
ZKA2012m/1005	20	32	65	37	50	87	14.73	1134	11.12
ZKA2016m/1002	25	32	50	37	40	75	14.73	1415	13.87
ZKA2016m/1005	25	32	65	37	50	87	14.73	1497	14.68

### Construction

Two brass extrusions joined by brazing. Constant force spring attached to a simple plug in a stainless steel carrier.

### Special features

Very compact design taking up a minimum of circumferential space  
Finish – black lacquer on oxidised copper plate

