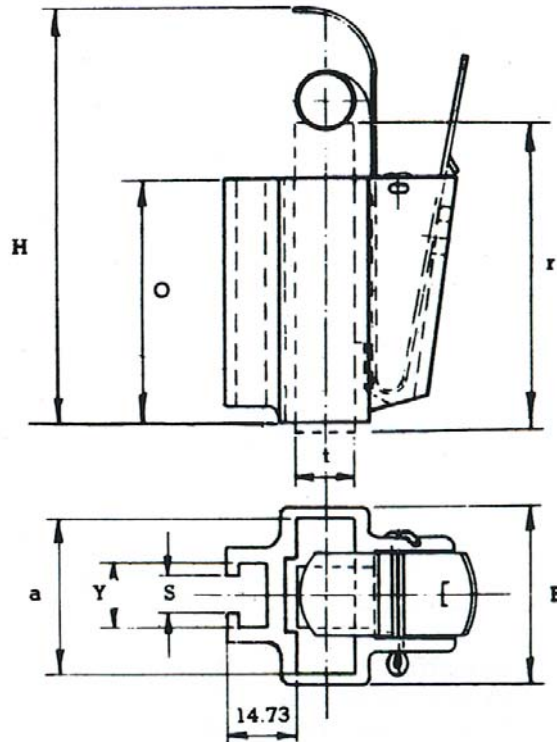


CONSTANT FORCE BRUSH HOLDERS ZKA long type

Series ZKA (cast) Radial brush holder



Type number	t	a	r	H	O	S	B	Y	GMS force	Newtons
ZKA1606m/4	10	25	50	75	40	6.2	30	10.3	454	4.45
ZKA1608m/4	12.5	25	50	75	40	6.2	30	10.3	567	5.56
ZKA1610m/4	16	25	50	75	40	6.2	30	10.3	726	7.12
ZKA1612m/4	20	25	50	75	40	6.2	30	10.3	893	8.75
ZKA2006m/6	10	32	64	85	50	8.2	36	13.3	567	5.56
ZKA2008m/6	12.5	32	64	85	50	8.2	36	13.3	708	6.94
ZKA2010m/6	16	32	64	85	50	8.2	36	13.3	962	9.43
ZKA2012m/6	20	32	64	85	50	8.2	36	13.3	1134	11.12
ZKA2016m/6	25	32	64	85	50	8.2	36	13.3	1497	14.70

Semi captive stainless steel carrier with constant force spring
Finish – natural lacquered

